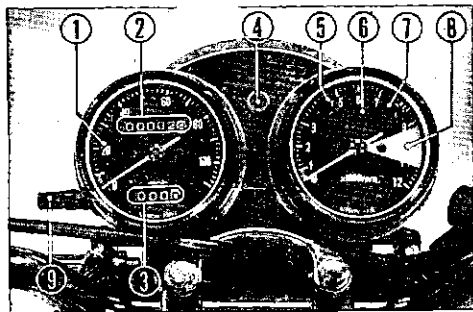


CB250 • CB360 U.K. and general type

The text of this manual is compiled on the basis of a U.S.A. type. The descriptions given on this light-green sheet of paper are the ones which are main different from the text and are applied only to U.K. and general types.

• Instruments and Indicator Lights (U.K. type)

- ① Speedometer
- ② Odometer
- ③ Tripmeter
- ④ High beam indicator light
- ⑤ Neutral indicator light
- ⑥ Tachometer
- ⑦ Turn signal indicator light
- ⑧ Tachometer red zone
- ⑨ Tripmeter reset knob



• Tire Recommendation

Tire inflation pressure (cold)	Driver only	Front: 26 psi (1.8 kg/cm ²) Rear : 28 psi (2.0 kg/cm ²)
	Driver and passenger	Front: 26 psi (1.8 kg/cm ²) Rear : 34 psi (2.4 kg/cm ²)
Tire size		Front: 3.00-18, Rear: 3.50-18