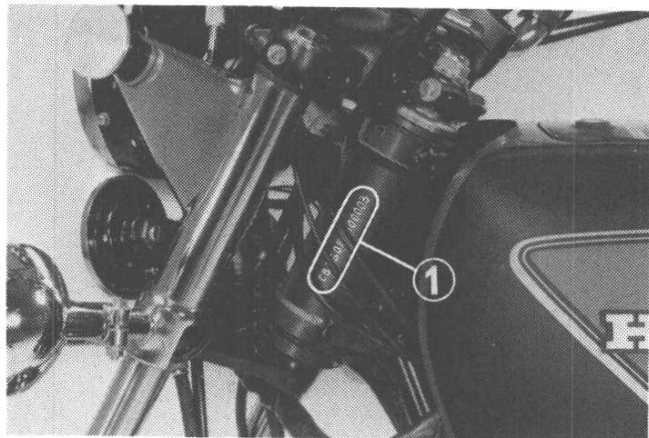


## SERIAL NUMBER LOCATION

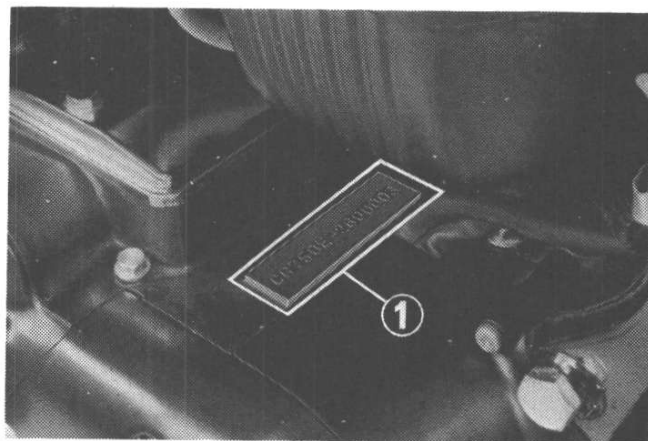
---

The frame serial number (1) is stamped on the left side of the steering head. The engine serial number (2) is stamped on top of the left side of the crankcase. These serial numbers are required when registering the motorcycle.

Refer to frame and engine serial numbers when ordering replacement parts to ensure that you will obtain the correct parts for your model series.



(1) Frame serial number



(2) Engine serial number