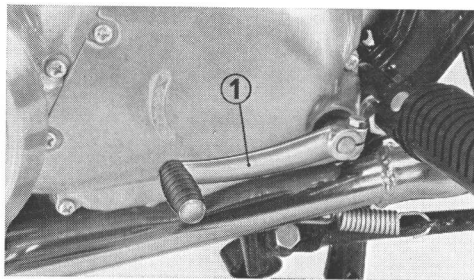


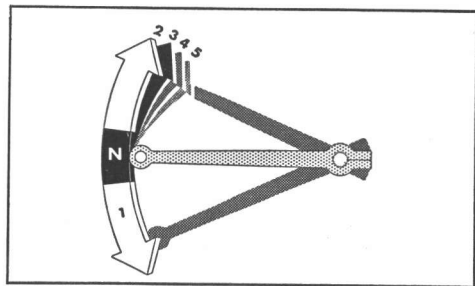
## ● Gear Change Pedal

The gear change pedal ① located near the left foot rest is of the progressive shift, positive stop type, which means one full stroke of the gear change pedal will shift only one gear position. The shifting sequence is arranged as shown in the figure. Shifting from the neutral position into low gear (1st) is performed by depressing the gear change pedal with the toe. Shifting to 2nd, 3rd, 4th and top gear (5th) is

performed by progressively raising the pedal. Shifting down to the lower gears is performed by progressively depressing the pedal. The transmission neutral position is located between 1st and 2nd gear. **CAUTION:** During normal gear changes the clutch must be disengaged and the throttle momentarily closed to avoid excessive engine R.P.M. and stress on drive train components.



① Gear change pedal



SHIFTING SEQUENCE