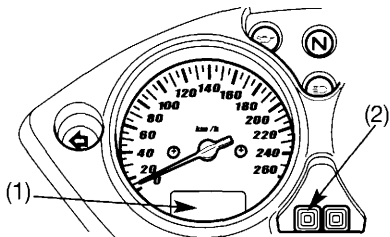


Odometer/Tripmeter Display

The display (1) shows two functions: odometer and two tripmeters.

Push the button (2) to select the “ODO” and “TRIP1” , “TRIP2” mode.

To reset the tripmeter, push and hold the button (2) when the display is in the “TRIP1” or “TRIP2” mode.

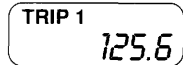


- (1) Odometer/Tripmeter display
(2) Odometer/Tripmeter select and reset button

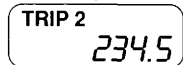
Odometer



Tripmeter 1



Tripmeter 2



Tripmeter reset

