

Presetting of Tachometer Red Zone (REV) Indicator Activation Revolution and Indication Pattern

The REV indicator activation revolution and the indication pattern can be altered for your choice.

To set the REV indicator activation revolution:

The original red zone revolution can be selected in the following range:

< Except F and KO types >

2,000-to-13,000 min^{-1} (rpm)

< F type only >

2,000-to-12,000 min^{-1} (rpm)

< KO type only >

2,000-to-12,500 min^{-1} (rpm)

1. Press and hold control button A (1), turn on the ignition switch. Keep control button A pressed in until the initial display is completed.

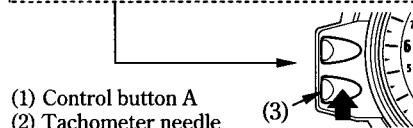
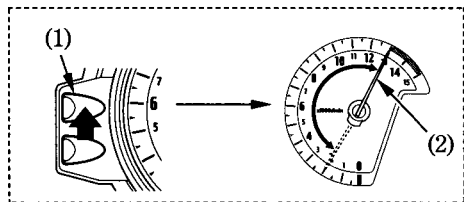
The tachometer needle moves to the set-up revolutions.

2. Each time you press control button A, the tachometer needle (2) will move by an increment of 500 min^{-1} (rpm).

By pushing and holding control button A for more than 1 second, the tachometer needle will move by an increment of 1,000 min^{-1} (rpm).

As the revolution goes beyond the allowable range, the needle will automatically return to 2,000 min^{-1} (rpm).

After completing the original red zone revolution preset, press control button B (3), and proceed to the indication pattern presetting.



- (1) Control button A
- (2) Tachometer needle
- (3) Control button B