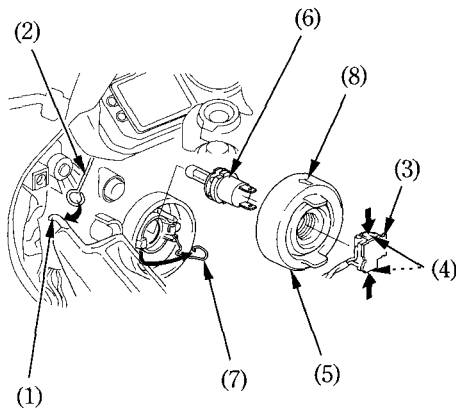


## Headlight Bulb

1. Remove the inner panel (page 61).
2. Remove the hook (1) from the stay (2).
3. Disconnect the connector (3) by pressing tabs (4).
4. Remove the dust cover (5).
5. Remove the bulb (6) while pressing down on the pin (7).
6. Pull out the bulb (6) without turning.
7. Install a new bulb in the reverse order of removal.
  - Install the dust cover with its arrow mark (8) facing up.



- |               |                |
|---------------|----------------|
| (1) Hook      | (5) Dust cover |
| (2) Stay      | (6) Bulb       |
| (3) Connector | (7) Pin        |
| (4) Tabs      | (8) Arrow      |