

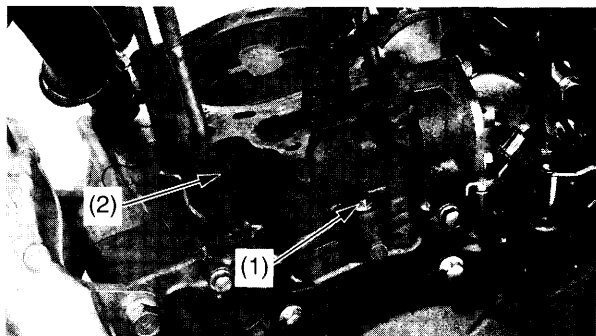
# Piston/Piston Rings/Piston Pin

## Cylinder Removal

1. Remove the cylinder bolt (1) and cylinder (2).

### NOTICE

*Do not let the cam chain fall into the crankcase.  
Do not pry on or strike the cylinder.*

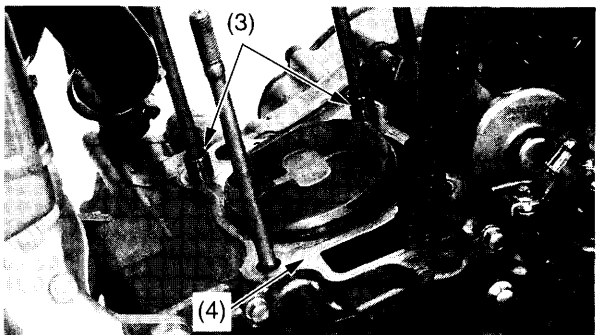


- (1) cylinder bolt  
(2) cylinder

2. Remove the dowel pins (3) and cylinder gasket (4).

### NOTICE

*Do not let the dowel pins fall into the crankcase.*

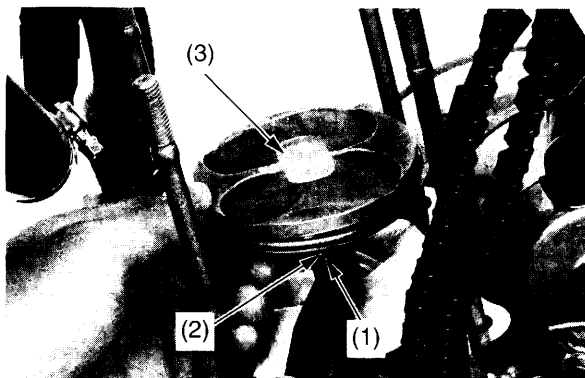


- (3) dowel pins  
(4) cylinder gasket

## Piston Removal

1. Place clean shop towels in the crankcase to keep the piston pin clips, or other parts, from falling into the crankcase.
2. Remove the piston pin clips (1) using a pair of needle-nose pliers.
3. Press the piston pin (2) out of the piston (3), and remove the piston.

Under racing conditions, the piston and rings should be replaced after 15.0 hours of running.  
Replace the piston after 15.0 hours of running

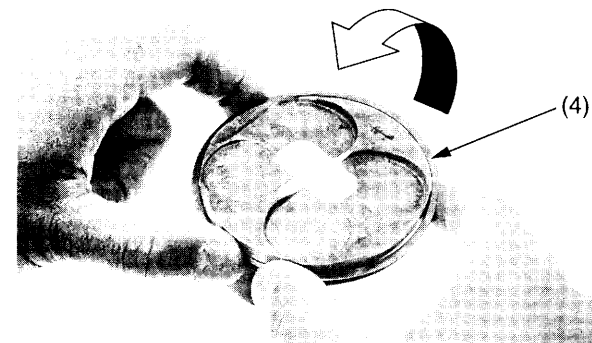


- (1) piston pin clip  
(2) piston pin  
(3) piston

4. Spread each piston ring (4) and remove by lifting it up at a point just opposite the gap.

### NOTICE

*Do not damage the piston ring by spreading the ends too far.*



- (4) piston ring