

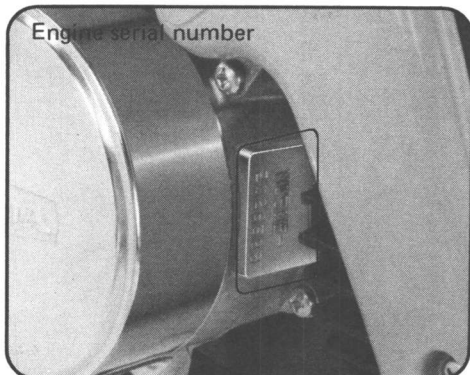
## SERIAL NUMBER LOCATION

Frame serial number



The frame serial number is stamped on the right side of the steering head. The engine serial number is stamped on the right side of the crankcase near the generator cover. These serial numbers are required when registering the motorcycle.

Engine serial number



Refer to frame and engine serial numbers when ordering replacement parts to ensure that you will obtain the correct parts for your model series.