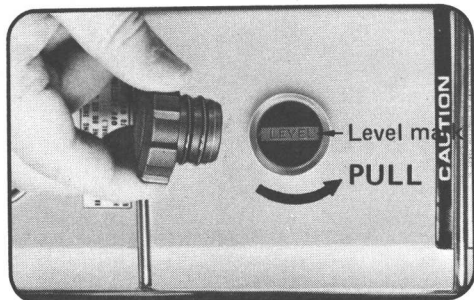


Oil Level — Check the oil level and fill the tank to the level mark if the level is below the top of the sight glass.



Capacity: 0.8ℓ (0.84 U.S. qt., 0.70 Imp. qt.)

USE HONDA 2 STROKE INJECTOR OIL (Positive Lubrication) OR ITS EQUIVALENT

CAUTION

- * Do not pre-mix gasoline and oil. Fill the oil tank with oil only.
- * The HONDA 2 STROKE INJECTOR OIL has been specifically tested in and is recommended for this engine. Use of other unrecommended oils may cause excessive carbon build-up in the engine and exhaust system resulting in loss of power and possible engine damage.
- * If the oil level in the sight glass is below the lower level, check the tube from the oil tank to the oil pump. If air is present in this tube, do not start the engine. The motorcycle must be taken to an authorized Honda dealer for inspection and bleeding of the oil system. Failure to do this will result in serious engine damage.

NOTE

When filling take care not to allow foreign materials to enter the tank.