

## STARTING THE ENGINE

Your FOURTRAX is equipped with a gear position starter cut-off system. The engine cannot be started if the transmission is in a forward gear – unless the clutch lever is pulled in. The engine cannot be started if the transmission is in reverse gear.

### Preparation

1. Select a level surface and lock the parking brake (page 22 ) before starting the engine.
2. Turn the fuel valve ( 1 ) and ignition switch ( 2 ) to ON.
3. Make sure the engine stop switch ( 3 ) is at run.
4. Make sure that the transmission is in neutral by checking that the neutral indicator lamp lights.

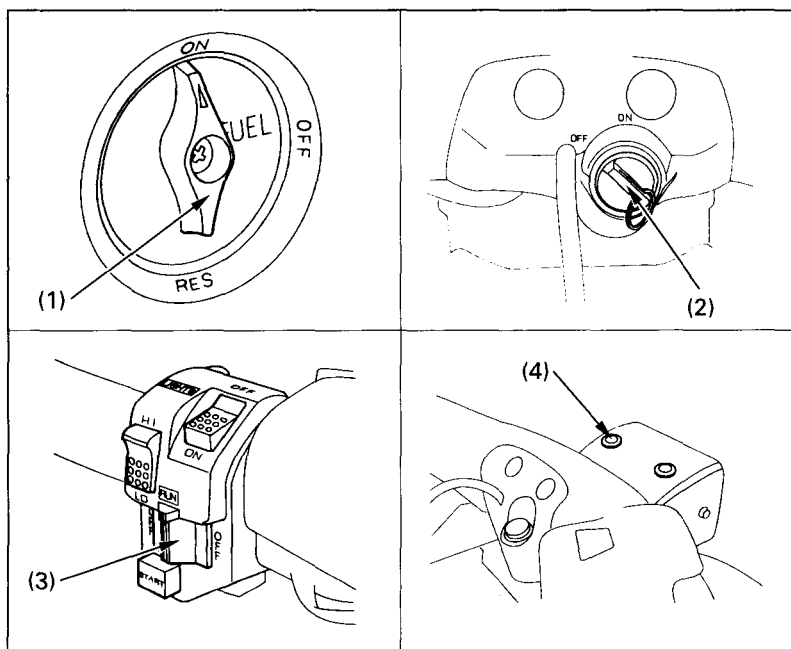


Fig. 3-8 (1) Fuel valve  
(2) Ignition switch

(3) Engine stop switch  
(4) Neutral indicator lamp