

Maintenance Fundamentals

A concentration of antifreeze below 40 % will not provide proper corrosion and cold temperature protection. A concentration of up to 60 % will provide better protection in colder climates.

NOTICE

Using coolant not specified for aluminium engines or using ordinary tap water can cause corrosion.

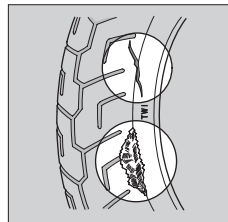
Tyres (Inspecting/Replacing)

Checking the Air Pressure

Visually inspect your tyres and use an air pressure gauge to measure the air pressure at least once a month or any time you think the tyres look low. Always check air pressure when your tyres are cold.

Inspecting for Damage

Inspect the tyres for cuts, slits, or cracks that exposes fabric or cords, or nails or other foreign objects embedded in the side of the tyre or the tread. Also inspect for the bumps or bulges in the side walls of the tyres.



Inspecting for Abnormal Wear

Inspect the tyres for signs of abnormal wear on the contact surface.

