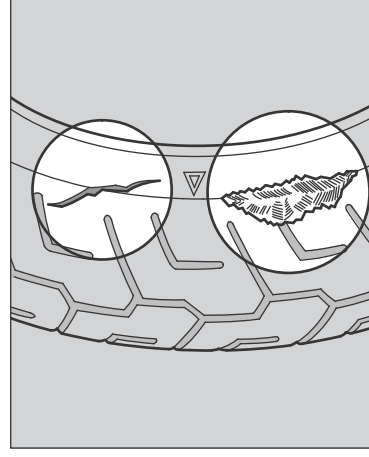


## Tyres (Inspecting/Replacing)

### ■ Checking the Air Pressure

Visually inspect your tyres and use an air pressure gauge to measure the air pressure at least once a month or any time you think the tyres look low. Always check air pressure when your tyres are cold.

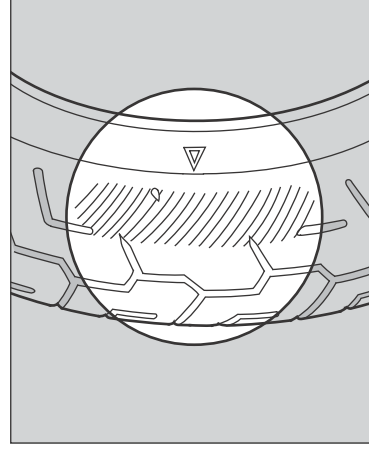
### ■ Inspecting for Damage



Inspect the tyres for cuts, slits, or cracks that exposes fabric or cords, or nails or other foreign objects embedded in the side of the tyre or the tread. Also inspect for

the bumps or bulges in the side walls of the tyres.

### ■ Inspecting for Abnormal Wear



Inspect the tyres for signs of abnormal wear on the contact surface.