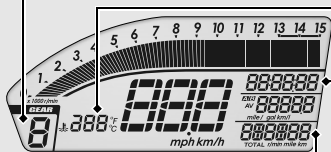


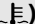
Gear position indicator

Shows 1st to 6th gear position.

**Odometer [TOTAL]/Numerical tachometer display**


SET button switches between odometer & numerical tachometer display.

- Odometer: Total distance ridden.
- Numerical tachometer display: Shows engine revolutions per minutes digit.

Coolant temperature gauge ()

Display range: 95 °F (35 °C) to 270 °F (132 °C)

- Below 94 °F (34 °C): " - - " displays
 - Between 251 °F (122 °C) and 269 °F (131 °C):
 - High coolant temperature indicator lights
 - Coolant temperature digit flash
 - Above 270 °F (132 °C):
 - High coolant temperature indicator lights
 - "270" (°F) / "132" (°C) flashes
- ▶ Even if the engine coolant temperature is low, the cooling fan may start running when you rev up the engine. This is normal.

Clock (12-hour display)/Lap timer**To set the clock:**  **P.27****Lap timer**  **P.36**