

Tires (Inspecting/Replacing)

Checking the Air Pressure

Even though your motorcycle is equipped with tire pressure monitoring system (TPMS), visually inspect your tires and use an air pressure gauge to measure the air pressure at least once a month or any time you think the tires look low. Always check air pressure when your tires are cold.

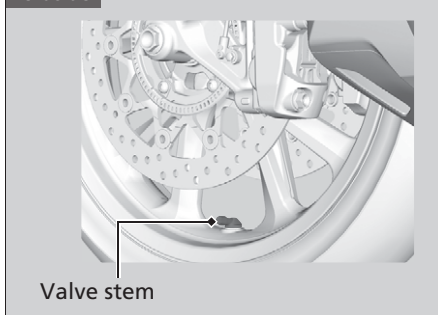
GL1800/D/DA

Do not adjust tire pressure using the values indicated on the tire pressure gauge of the INFO 1 display.

The tire pressure values indicated on the tire pressure gauge of the INFO 1 display may not match actual values, because the tire pressure gauge indication is not updated instantly and is updated only at a certain period.

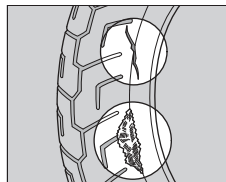
Even if the direction of the valve stem is changed, do not return it to the original position. Have your motorcycle inspected by your dealer.

Left side



Inspecting for Damage

Inspect the tires for cuts, slits, or cracks that exposes fabric or cords, or nails or other foreign objects embedded in the side of the tire or the tread. Also inspect for any unusual bumps or bulges in the side walls of the tires.



Inspecting for Abnormal Wear

Inspect the tires for signs of abnormal wear on the contact surface.

