



# FUEL METER TROUBLESHOOTING

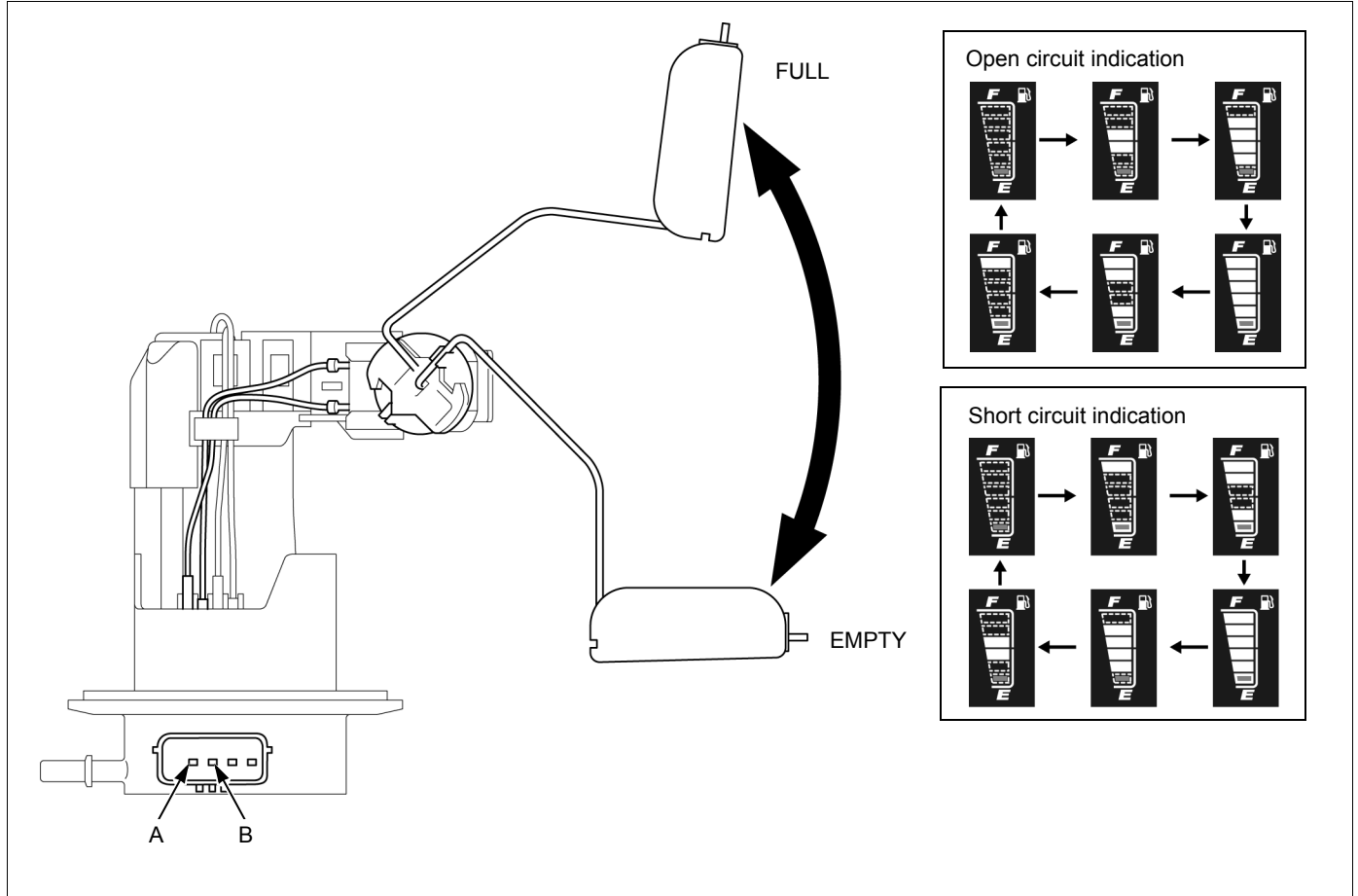
## FUEL METER NEEDLE DOES NOT MOVE



• Fuel pump unit →2-4



• Loose or poor contacts of related terminal/connector



### 1. Fuel Level Sensor Circuit Inspection

- Check the Y/W and G wire.
- Is there open or short circuit?

Yes ►

- Faulty Y/W or G wire

No ▼

### 2. Fuel Level Sensor Inspection

- Connection: A – B
- Standard: FULL 6 – 10 Ω, EMPTY 90 – 100 Ω.
- Does the standard resistance exist?

No ►

- Replace the fuel level sensor with a new one →4-36, and recheck.

Yes ▼

Replace the meter with a new one →4-34, and recheck.