

INSPECTION

Check the piston spring for weakness or damage. Inspect the oil and piston seals for damage or deterioration.

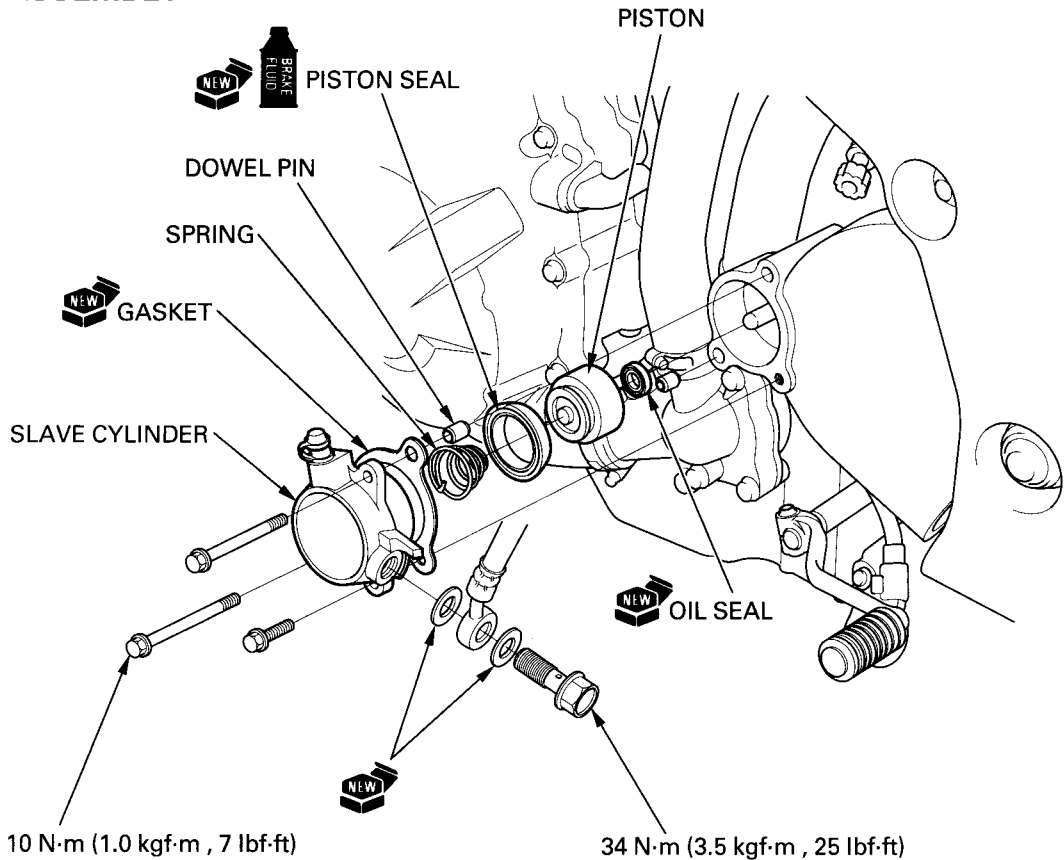
Replace the oil seal and piston seal if necessary. Clean the seal grooves with clean brake fluid.

Check the slave cylinder for scoring or other damage.

Check the slave cylinder piston for scratches, scoring or other damage.



ASSEMBLY



Install the new piston seal with its groove side facing to the slave cylinder.

Install the new oil seal with its groove side facing to the slave cylinder piston.

Install the spring into the boss of the piston.

Lubrication the piston and piston seal with brake fluid.

Install the spring and piston into the slave cylinder.

